



Application for Community Assistance

The National Park Service Rivers, Trails and Conservation Assistance program supports successful partnerships with communities across America in achieving their conservation and outdoor recreation visions.

Please follow the [application steps](#) on our website and then submit this completed application along with a map of your project site, at least three letters of support, and any other supplementary information that helps us learn more about your project to your National Park Service staff contact by August 1.

Date: 8-1-2013 **Project Name:** Pensacola State College - Multi-use Path South Santa Rosa

Project Location Description (provide a location/site map): Pensacola State College - South Santa Rosa Center, 5075 Gulf Breeze Pkwy., Gulf Breeze, Florida 32563; See Attachment for site map.

City and State: Pensacola, Florida

Congressional District(s) Number (s): FL-001

Applicant organization(s): Pensacola State College Foundation

Primary Contact: Mitzie Sowell **Title:** Assistant Professor, Biology

Street Address: 5075 Gulf Breeze Pkwy

City: Gulf Breeze **State:** FL **Zip Code:** 32563

Email: msowell@pensacolastate.edu **Website (if applicable):** **Daytime Phone:** 850-471-4652

Project Description:

1. Describe: *(limit to 750 words total)*
 - a) Your vision and project goals;
 - b) Accomplishments to date;
 - c) Support: local, city, regional and state plans, endorsements from elected officials and boards, etc.;
 - d) Community benefits that would result from implementing the proposed project;
 - e) Geographic location of your project (city, watershed, specific areas within a city or county, etc.);
 - f) Important demographic characteristics of your project area.
 - a. Parks and trails are integral to community and individual well-being. Trails serve multiple purposes including exercise (walking, jogging, cycling), bird watching, and equestrian use. Creating parks and trails for residents, employees of local businesses, children attending and staff working at the neighboring school, and the surrounding community, will increase physical activity, support mental health, and foster community and social interactions. This trail will be designed to surround that campus near other local area trail systems.

Pensacola State College Foundation, the direct support organization for Pensacola State College, is requesting technical assistance to plan and implement an outdoor recreation nature trail for Pensacola State College faculty, staff and students, the local community, residential areas, businesses and various youth organizations. The goals are to improve fitness levels and quality of life by actively engaging all participants in outdoor recreation and promoting conservation and stewardship by identifying native species of organisms (flora and fauna) near and along the trail. In meeting these goals, it is important to maintain and protect natural and cultural resources to minimize the impact on the environment and to avoid cultural resource damage.
 - b. As part of a service learning project, conducted as a result of their professor's participation in a STEM-Service Learning Institute funded by Florida Campus Compact, biology students learned that heart disease is the number one killer in the U.S. The students determined that exercise would be an easy approach for students, faculty, staff, community members and youth to implement to improve health and decrease risks for disease. As a group, the students suggested a trail be constructed around campus to provide an area for outdoor recreation. This project will foster environmental awareness and understanding among trail walkers.
 - c. Support from the Gulf Breeze and Navarre Chambers of Commerce, Florida Campus Compact, local businesses and hospitals to develop a plan to implement and sustain a nature trail. The Project Director will facilitate

collaboration with each supporter to promote the use of this nature trail to members of the community and local businesses to increase physical exercise. Pensacola State College will work with Florida Campus Compact providing technical assistance, where appropriate, to identify, develop and implement service learning activities associated with the trail project.

d. The Pensacola MSA (Metropolitan Service Area) would benefit from the introduction of an additional nature trail that would positively influence physical activity, for both recreation and exercise. Overall this trail would greatly improve quality of life, provide improved levels of fitness, and allow for greater knowledge of native species.

e. Midway is an unincorporated community in southern Santa Rosa County, Florida, United States. It is part of the Pensacola–Ferry Pass–Brent Metropolitan Statistical Area. The area, which is also known as Woodlawn Beach is located about halfway between the communities of Gulf Breeze and Navarre, on the Fairpoint Peninsula. Its actual boundaries vary from source to source, but unofficially include most areas from the intersection of Soundside Drive with U.S. Highway 98, eastward until U.S. Highway 98 becomes Navarre Parkway.

f. Pensacola State College Foundation, Pensacola State College and partners serve Escambia and Santa Rosa counties, which have a combined population of 448,991; (US Census Bureau: 2010 Census Redistricting Data Survey File). The community profile for the vicinity of the nature trail is 89,748 people; male and female with an equal gender distribution and a median age of 38.5; total households: 21,529 with 15,832 family households and 5,697 non-family households.

A community-wide effort to place a nature trail at the South Santa Rosa Campus holds promise as an effective approach to reduce the local area's high obesity rates, enhance physical activities, support mental health, and service learning component. Promoting physical activity among children and adults is priority national health objective in the United States (U.S. Department of Health and Human Services, 2010).

County Health Rankings & Roadmaps (2013) report that in the Pensacola MSA, adult obesity rates, at 29%, are in the top 10 of all 67 counties in Florida, also exceeding the state of Florida (26%) and the national benchmark of 25%. The percentage of adults aged 20 and over reporting no physical activity is at 26%, exceeding both the state of Florida (24%) and national benchmark at 21%. The service area's rate of recreational facilities per 100,000 population is eight. This rate is below the state (9) and national (16) average for recreational facilities. The number of premature deaths (9,310) for the service area is well above the Florida (7,310) and almost double the national benchmark (5,317).

2. Describe how your project advances one or more key National Park Service objectives: *(limit to 500 words)*
 - a. Builds partnerships with health and wellness organizations to promote healthy lifestyles;
 - b. Engages youth or youth organizations to promote close-to-home resource conservation, stewardship, and outdoor recreation opportunities;
 - c. Develops and/or improves connections to parks, rivers, trails, and greenways in diverse urban areas and communities with limited resources and facilities;
 - d. Develops or improves access to National Park Service sites by enhancing connections to nearby communities;
 - e. Advances the protection and stewardship of large natural landscapes (parks, open spaces, and working lands) through partnerships;
 - f. Expands public access to water resources, such as creeks, rivers, lakes, bays, and the coast, and the development of water trails.

b. Engages youth or youth organizations to promote close-to-home resource conservation, stewardship, and outdoor recreation opportunities: The trail could be used by organizations such as the Boy Scouts and Girl Scouts to obtain badges dealing with health/fitness, conservation and stewardship. The trail could also be used to promote conservation and stewardship with local school system as part of science curricula and clubs. The trail could be utilized by any organizations or community youth in the area as a means for outdoor recreation.

c. Develops and/or improves connections to parks, rivers, trails, and greenways in diverse urban area and communities with limited resources and facilities: The trail would improve connections to the Soundside loop bike trail located at the end of Nantahala Road (.5 miles). There are two public boat ramps and public waterway accesses within 2 miles of the proposed trail. There are no free or public use facilities for recreation near the proposed trail.

e. Advances the protection and stewardship of large natural landscapes (parks, open spaces, and working lands) through partnerships: Partnerships would be established with local community businesses, local clubs (Biology Club of Pensacola

State College), local youth organizations (Boy Scouts and Girl Scouts), local school systems, etc., to conserve, maintain and protect the trail and open spaces around the trail. The partners who help implement the trail will be encouraged to take ownership in the sense that they will help with maintenance activities and encourage stewardship among their user group.

Applicant and Partner Roles: *(limit to 750 words)*

3. a. Describe your role and the level of commitment/services your organization can provide to the project.
- b. List the key partners involved with the project. Briefly summarize the existing or anticipated role and contribution of each partner.
- c. Please include three support letters from listed partners other than the applicant or individual(s) of the applying organization that note their support and list their contribution(s) and anticipated project role and responsibilities.

a. **Pensacola State College and partners will commit to the project by maintaining the trail and premises surrounding the trail that will provide a positive experience for trail users. The college will provide pedestrian-friendly parking-lot designed to reduce distance to desirable destinations within walking distance of the trail. Student groups and volunteer organizations will engage with the project to strategically place plants with signage displaying types of plants and trees, and maintenance of natural surface trails and survey trail damage and report after storms and other severe weather events. The college will also involve students from the carpentry class to install amenities, such as seating, shade, picnic tables, to promote opportunities for congregation. The college will develop relationship framework with community businesses and other partners - "friends of the trail" and other volunteer activities to maintain the trail and provide plants and trees.**

b. **Superintendent for the Santa Rosa County School District: The Santa Rosa County School District is fully committed to supporting the college's efforts through the National Park Service's Rivers, Trails and Conservation Assistance program to promote the use of this community trail to local schools and to act in an advisory capacity as the college incorporates educational stations along the trail that would enhance the trail utilization experience.**

Gulf Breeze Chamber of Commerce: The Gulf Breeze Area Chamber of Commerce is fully committed to supporting the college's efforts through the National Park Service's Rivers, Trails and Conservation Assistance program to promote the use of this community trail to local businesses and being a form of communication to area businesses who employ members of the community that will be most likely to use the trail.

Navarre Beach Area Chamber of Commerce: The Navarre Beach Area Chamber of Commerce is fully committed to supporting the college's efforts through the National Park Service's Rivers, Trails and Conservation Assistance program to promote the use of this community trail and it's convenient location to residents, local businesses and being a form of communication to area businesses who employ members of the community that will be most likely to use the trail.

Midway Water Systems: Midway Water System is fully committed to supporting the college's efforts through the National Park Service's Rivers, Trails and Conservation Assistance program to promote the use of this nature trail to members of the community, and businesses to promote employee fitness and wellness programs.

Mediacom: Mediacom is fully committed to supporting the college's efforts through the National Park Service's Rivers, Trails and Conservation Assistance program to promote the use of this nature trail to members of the community, and businesses to promote employee fitness and wellness programs.

Florida Campus Compact: Florida Campus Compact is fully committed to supporting the college's efforts through the National Park Service's Rivers, Trails and Conservation Assistance program by providing technical assistance, where appropriate, to identify, develop and implement service learning activities associated with the trail project.

c. **See Attachment for Letters of Support**

Public Support: *(limit to 500 words)*

4. Describe level of public support to date, and any plans for future public outreach and participation.
Pensacola State College Foundation has complete support from Pensacola State College, Florida Compass

Compact, and key business players in the City of Navarre, Gulf Breeze, and Pensacola, including hospitals and Santa Rosa County School District. Key partners will continue to look for outreach and participation to help reach the community and business for use and maintenance of the trail.

How the National Park Service Could Help:

5. a. What are the biggest challenges and overall needs of the project? *(limit to 350 words)*
b. What type of assistance are you seeking from National Park Service staff? Please include a short description of the specific project need(s) for each of the boxes checked. *(limit to 150 words for each box)*

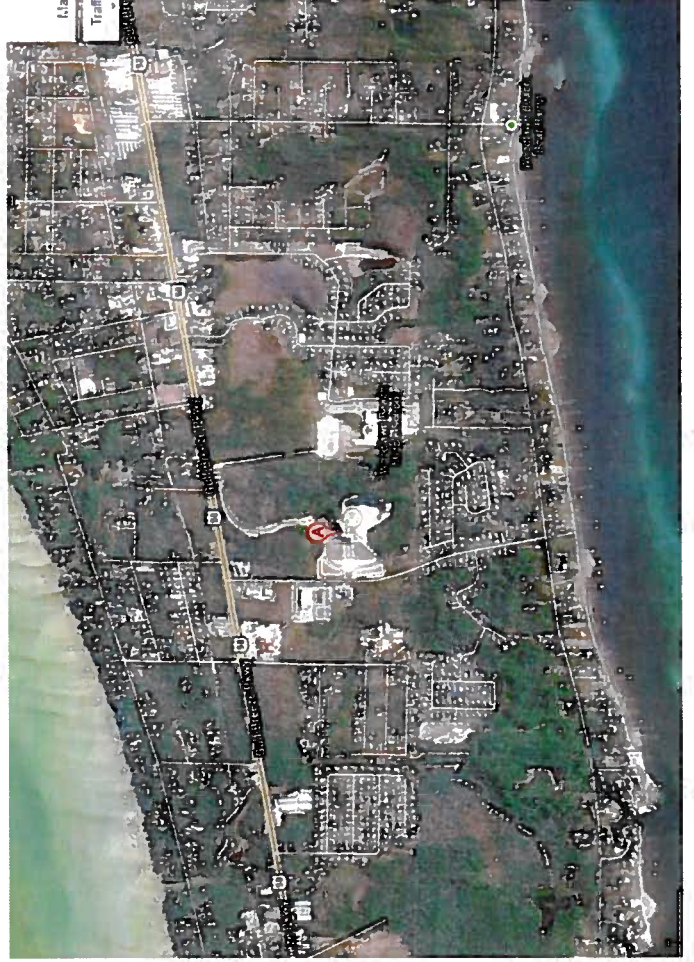
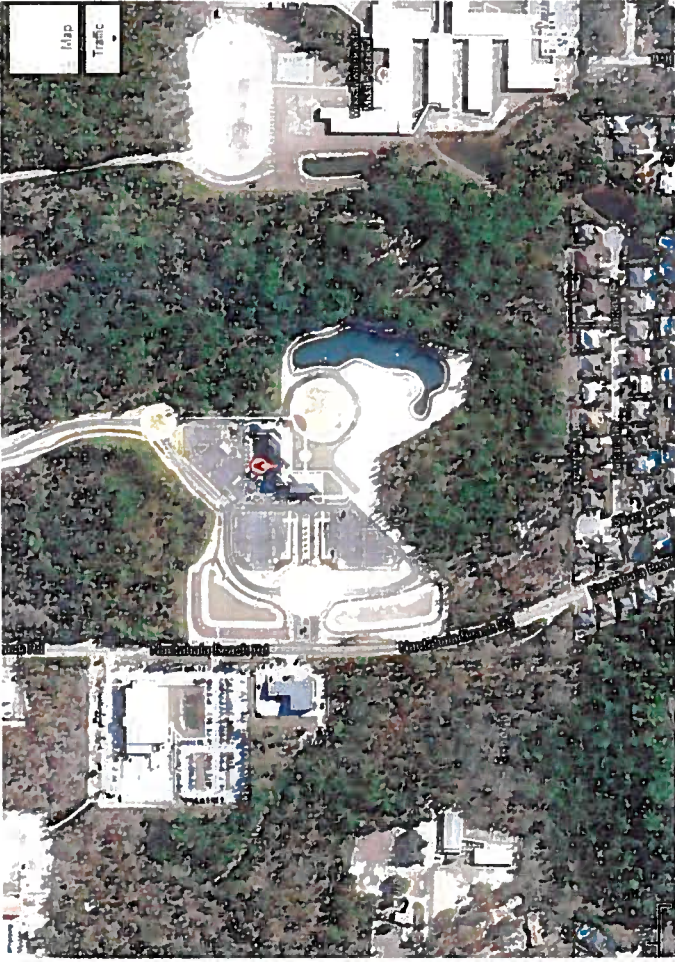
- Defining project vision and goals
- Identifying and analyzing issues and opportunities
- Assessing and engaging partners and stakeholders
- Inventory and mapping of community resources
- Priority setting and consensus building

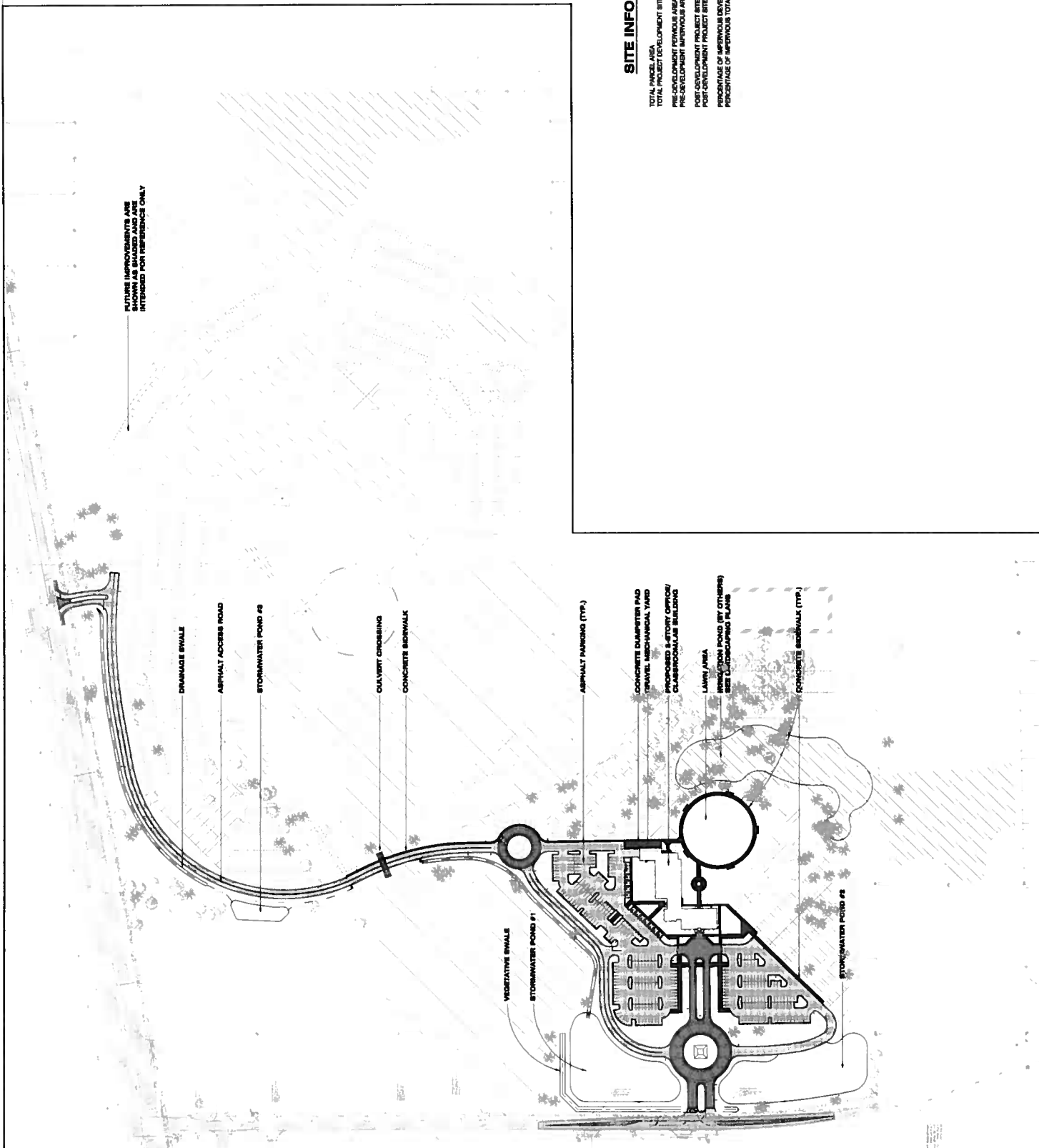
Identifying funding sources Funding for any “extra” projects, such as the South Santa Rosa Center trail, which are not considered as providing direct classroom service for students at the college, must come from external funding sources. Although Pensacola State College is committed to providing the requisite ongoing maintenance necessary to maintain the trail, once installed, prospective sources for the initial funding needed for the trail project planning and implementation must be identified. Pensacola State College receives funding from the state and tuition dollars from the students. The Pensacola State College Foundation, as the direct support organization for the College, and the College grant office functions, each having past demonstrated success, will continue to search for external funding for the trail with the technical assistance provided by a successful RTCA project.

- Organizational development
- Designing community outreach and participation strategies

Planning (trail, park, open space, greenway, etc.) One particular challenge will be the need to keep in mind the unique characteristics of the wetlands, which are part of the College property on which the South Santa Rosa Center is located, and the close proximity of the Gulf Islands National Seashore during the planning and implementation phases of the proposed nature trail. Technical assistance will provide information vital to avoiding missteps in trail placement and will provide the direction required to navigate any special permitting requirements.

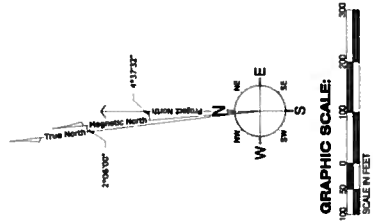
- Other





SITE INFORMATION

TOTAL INACB AREA	= 4,022,110 SF	= 117.06 AC
TOTAL PROJECT DEVELOPMENT SITE AREA	= 760,397 SF	= 21.98 AC
PRE-DEVELOPMENT IMPERVIOUS AREA	= 176,397 SF	= 5.13 AC
POST-DEVELOPMENT PROJECT SITE IMPERVIOUS AREA	= 588,000 SF	= 17.48 AC
POST-DEVELOPMENT PROJECT SITE IMPERVIOUS AREA	= 428,343 SF	= 12.33 AC
POST-DEVELOPMENT PROJECT SITE IMPERVIOUS AREA	= 159,657 SF	= 4.63 AC
PERCENTAGE OF IMPERVIOUS DEVELOPMENT SITE AREA	= 72 %	
PERCENTAGE OF IMPERVIOUS TOTAL PARCEL SITE AREA	= 16 %	





Timothy S. Wyrosdick
Superintendent of Schools

5086 Canal Street Milton, Florida 32570-6706

Phone: 850/983-5012

Suncom: 689-5012

Cellular: 850/777-7762

Facsimile: 850/983-5013

E-mail: WyrosdickT@mail.santarosa.k12.fl.us

July 15, 2013

Pensacola State College
Dr. Edward Meadows/President
1000 College Blvd
Pensacola, FL 32504

Dear Dr. Meadows:

The Santa Rosa County School District fully supports Pensacola State College and its mission and central purpose in developing an outdoor recreation trail located at the South Santa Rosa Center for the local community. The plan to install a nature trail will improve fitness levels and quality of life by actively engaging all participants in outdoor recreation and promoting conservation.

The Santa Rosa County School District is fully committed to supporting the college's efforts through the National Park Service's Rivers, Trails and Conservation Assistance program to promote the use of this community trail to local schools and to act in an advisory capacity as the college incorporates educational stations along the trail that would enhance the trail utilization experience.

Sincerely,

A handwritten signature in blue ink, appearing to read "Tim Wyrosdick", is written over a horizontal line.

Tim S. Wyrosdick
Superintendent

DISTRICT 1
Diane Scott

DISTRICT 2
E. Hugh Winkles

DISTRICT 3
Diane Coleman

DISTRICT 4
Jennifer Granse

DISTRICT 5
Scott Peden

July 17, 2013

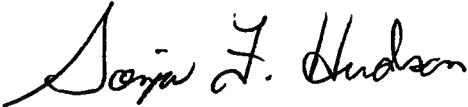
Pensacola State College
Dr. C. Edward Meadows, President
1000 College Blvd., Bldg 7, Rm717
Pensacola, FL 32504

Dear Dr. Meadows:

Mediacom fully supports Pensacola State College and its mission and central purpose in developing an outdoor recreation trail located at the South Santa Rosa Center for the local community. The plan to install a nature trail will improve fitness levels and quality of life by actively engaging all participants in outdoor recreation and promoting conservation.

Mediacom is fully committed to supporting the college's efforts through the National Park Service's Rivers, Trails and Conservation Assistance program to promote the use of this nature trail to members of the community, and businesses to promote employee fitness and wellness programs.

Sincerely,

A handwritten signature in black ink that reads "Sonja F. Hudson". The signature is written in a cursive style with a large, stylized initial 'S'.

Sonja F. Hudson, Director Human Resources
Mediacom Communications Corp.



July 17, 2013

Pensacola State College
Dr. Edward Meadows/President
1000 College Blvd
Pensacola, FL 32504

Dear Dr. Meadows:

I am pleased to announce that Midway Water System Inc. fully supports Pensacola State College and its mission and central purpose in developing an outdoor recreation trail at the South Santa Rosa Center for the local community. The plan to install a nature trail will improve fitness levels and quality of life by actively engaging all participants in outdoor recreation and promoting conservation.

Midway Water System Inc. is fully committed to supporting the college's efforts through the National Park Service's Rivers, Trails and Conservation Assistance program to promote the use of this nature trail to members of the community, and businesses to promote employee fitness and wellness programs.

Sincerely,

A handwritten signature in blue ink, appearing to read 'B. Agricola', is written over a light blue horizontal line.

Brenda S. Agricola
Midway Water System Inc.
850 932-5188



409 Gulf Breeze Parkway, Gulf Breeze, FL 32561
(850) 932-7888 Fax: (850) 934-4601

July 17, 2013

Pensacola State College
Dr. C. Edward Meadows, President
1000 College Blvd., Bldg 7, Rm717
Pensacola, FL 32504

Dear Dr. Meadows:

The Gulf Breeze Area Chamber of Commerce fully supports Pensacola State College, South Santa Rosa Center and its mission and central purpose in developing an outdoor recreation trail for the local community and organizations. The plan to install a nature trail will improve fitness levels and quality of life by actively engaging all participants in outdoor recreation and promoting conservation

The Gulf Breeze Area Chamber of Commerce is fully committed to supporting the college's efforts through the National Park Service's Rivers, Trails and Conservation Assistance program to promote the use of this community trail to local businesses and being a form of communication to area businesses who employ members of the community that will be most likely to use the trail.

Sincerely,

Josie Cotti
President/CEO



Florida | Campus Compact

Florida Campus Compact
1801 Miccosukee Commons Dr.
Suite 200, Tallahassee, FL 32308
tel (850) 488-7782
fax (850) 922-2928

July 16, 2013

Dr. C. Edward Meadows
Pensacola State College
1000 College Blvd.
Pensacola, FL 32504-8998

Dear Dr. Meadows:

Florida Campus Compact fully supports Pensacola State College and its work in developing an outdoor recreation trail located at the South Santa Rosa Center for the local community. The plan to install a nature trail will improve fitness levels and quality of life by actively engaging all participants in outdoor recreation and promoting conservation. In addition, this project will provide unique opportunities for students and faculty to participate in service learning activities. In fact, the idea for this trail project was initiated by a Pensacola State College faculty member integrating service learning into her science curriculum after she participated in a Florida Campus Compact STEM Institute for Service Learning at the college (funded through Learn & Serve).

Florida Campus Compact is fully committed to supporting the college's efforts through the National Park Service's Rivers, Trails and Conservation Assistance program by providing technical assistance, where appropriate, to identify, develop and implement service learning activities associated with the trail project.

Sincerely,

DeeDee Rasmussen
Executive Director

Woodlawn Beach Middle School

1500 Woodlawn Way
Gulf Breeze, FL 32563
850-934-4010
850-934-4015 fax
www.santarosa.k12.fl.us/wbm

Victor G. Lowrimore
Principal

Will Nowling
Assistant Principal

Brandon Koger
Dean of Students

John Simmons
Guidance Counselor

Vic Bennett
Guidance Counselor

Home of the Wildcats!

July 24, 2013

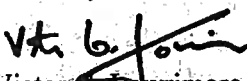
Pensacola State College
Dr. C. Edward Meadows, President
1000 College Blvd., Bldg 7, Rm717
Pensacola, FL 32504

Dear Dr. Meadows:

Woodlawn Beach Middle School fully supports Pensacola State College, South Santa Rosa Center, and its mission and central purpose in developing an outdoor recreation trail for the local community and organizations. The plan to install a nature trail will improve fitness levels and quality of life by actively engaging all participants in outdoor recreation and promoting conservation.

Woodlawn Beach Middle School is fully committed to supporting the college's efforts through the National Park Service's Rivers, Trails and Conservation Assistance program to promote the use of this community trail for students and to engage students in projects through our physical education and science departments.

Sincerely,


Victor G. Lowrimore
Principal