

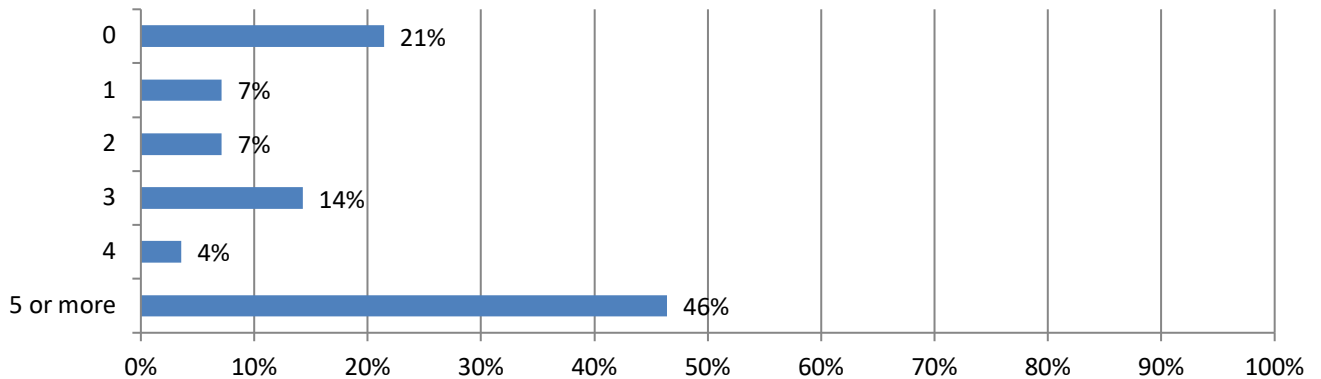


**AGC**  
THE CONSTRUCTION  
ASSOCIATION

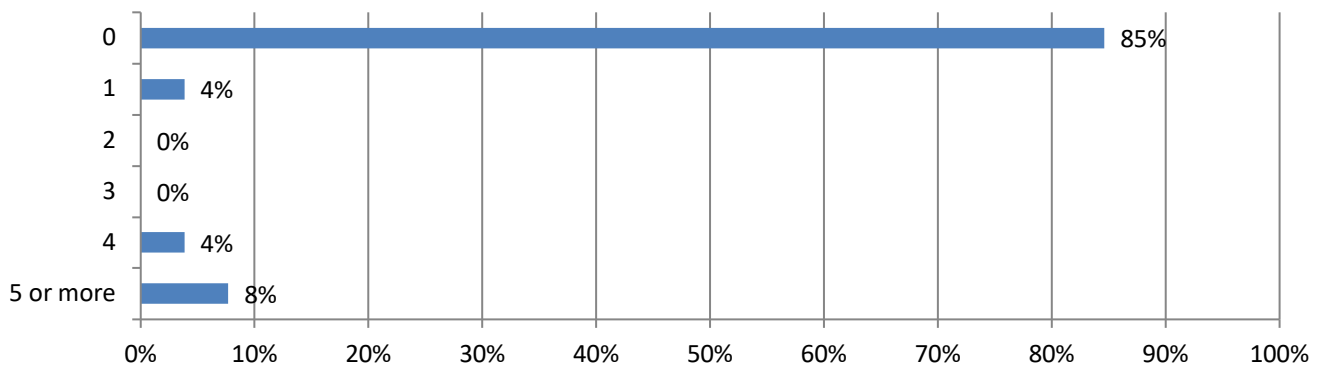
## 2020 Work Zone Awareness Survey Results Texas Results

Total 33 responses; Responses varied for some questions. Percentages are based on responses to each question and may not sum to 100 due to rounding (total specified in some questions).

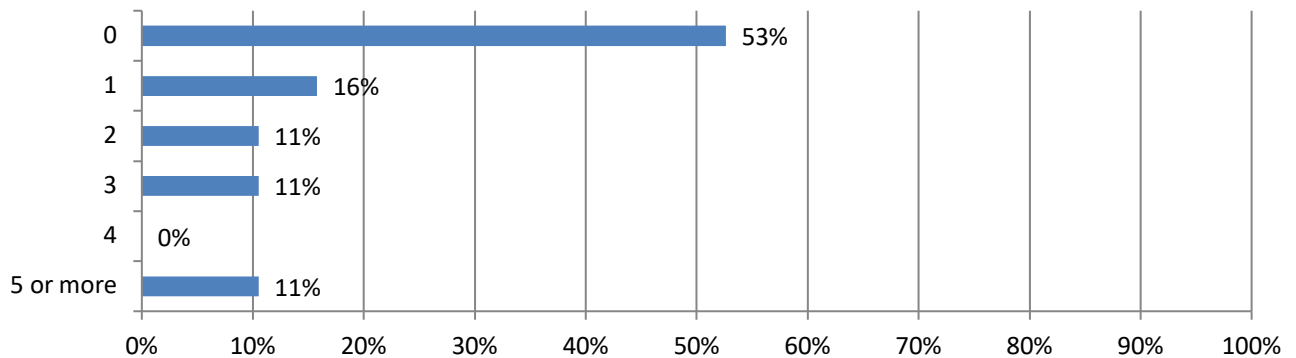
### 1. In the past 12 months, how many crashes involving a motor vehicle have occurred at a highway work zone where your firm operates? (28 Responses)



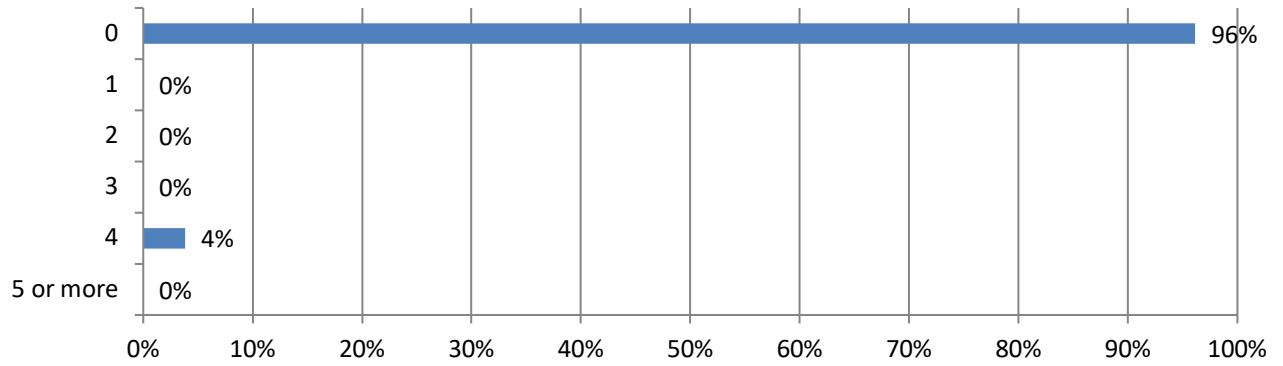
### 2. How many construction workers were injured in these crashes? (26 Responses)



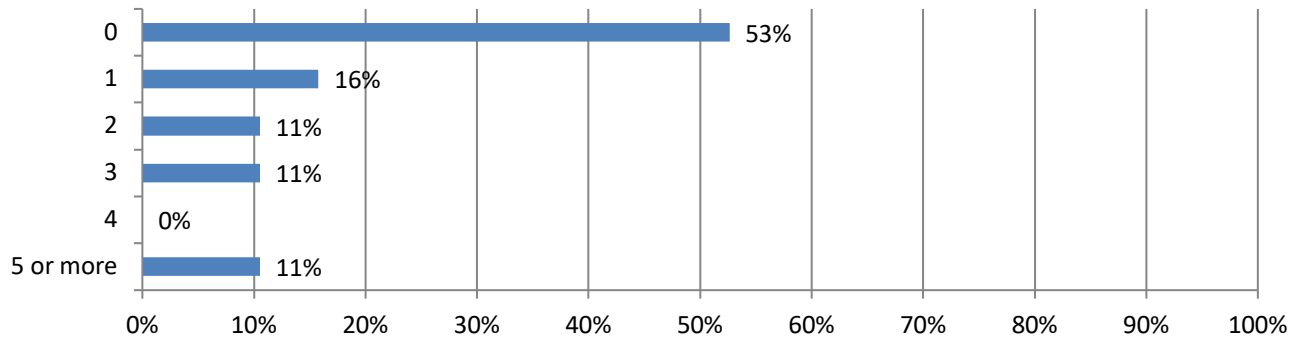
### 3. How many drivers or passengers were injured in these crashes? (19 Responses)



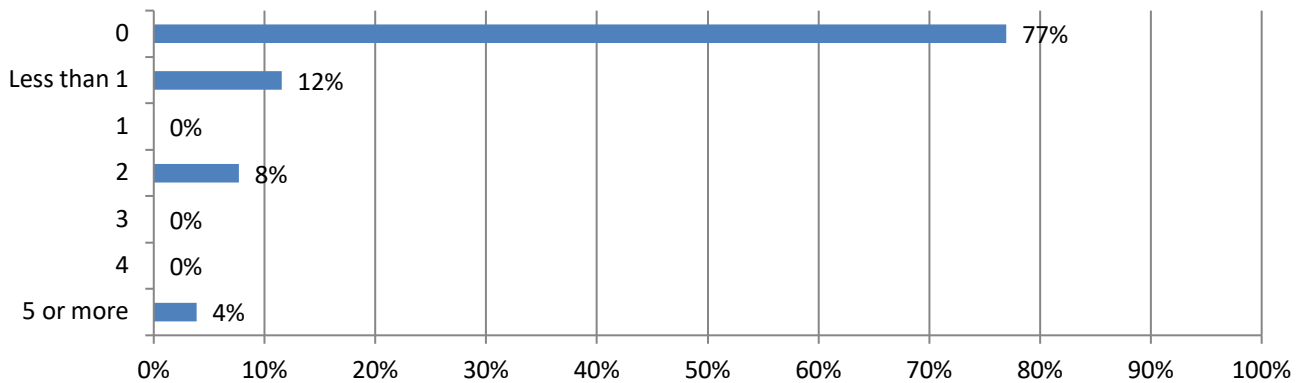
**4. How many construction worker fatalities resulted from these crashes? (26 Responses)**



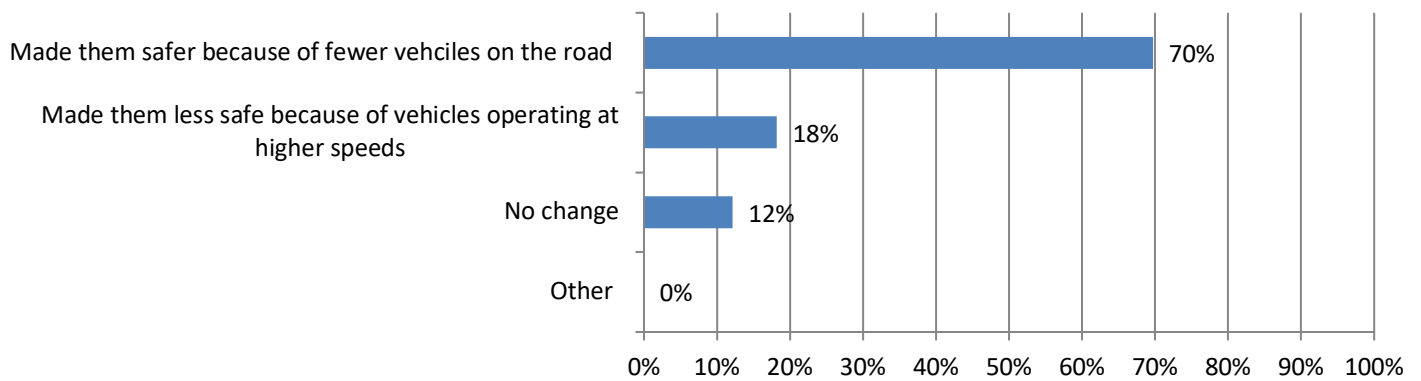
**5. How many driver or passenger fatalities resulted from these crashes? (19 Responses)**



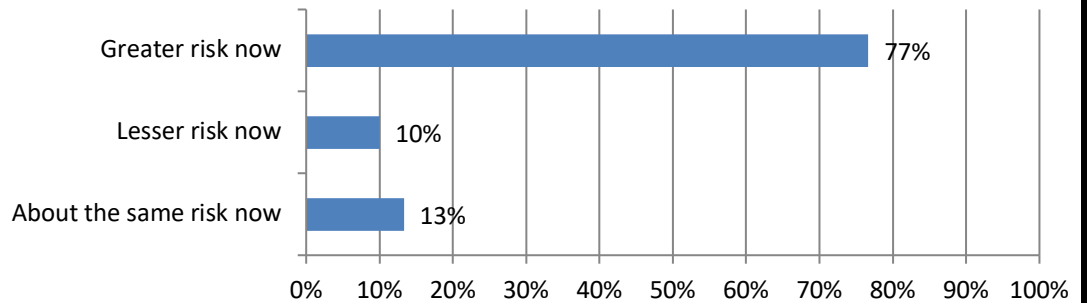
**6. How many days have your firm's projects been delayed because of these crashes? (26 Responses)**



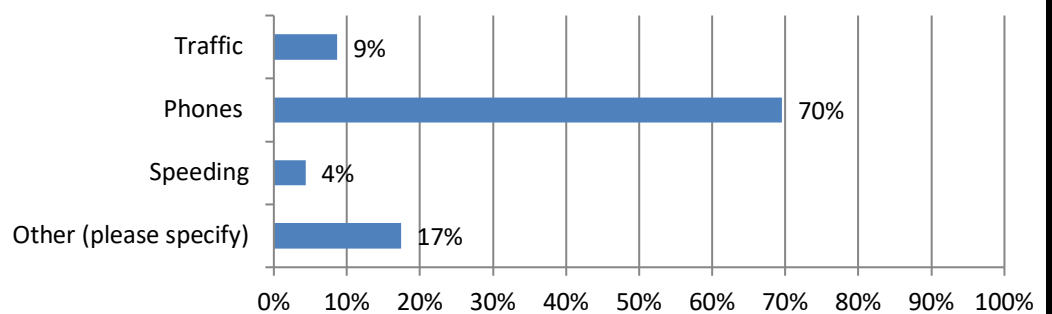
**7. How have changes in highway traffic levels since the coronavirus impacted safety in highway work zones?  
(33 Responses)**



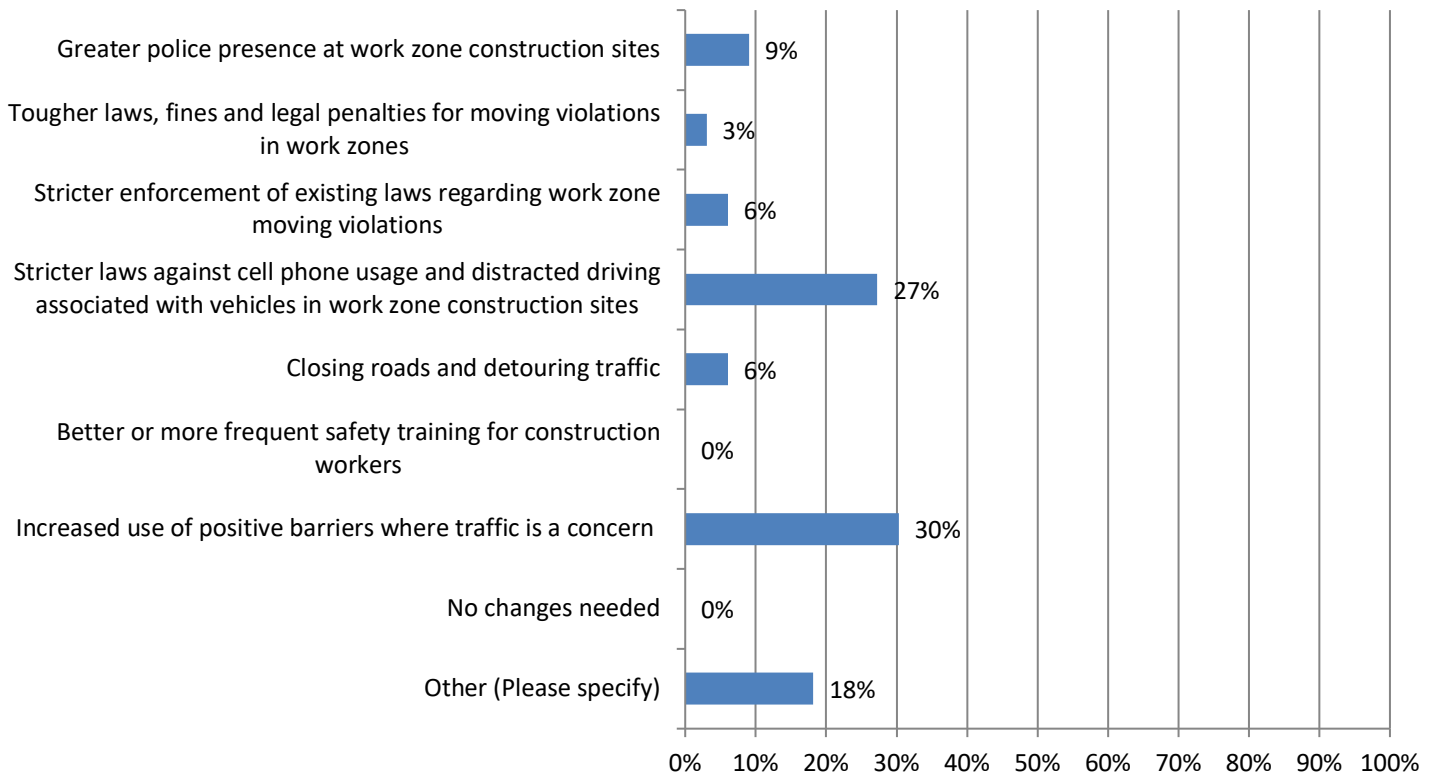
**8. In your opinion, how much of a risk are highway work zone crashes now compared to a decade ago?  
(30 Responses)**



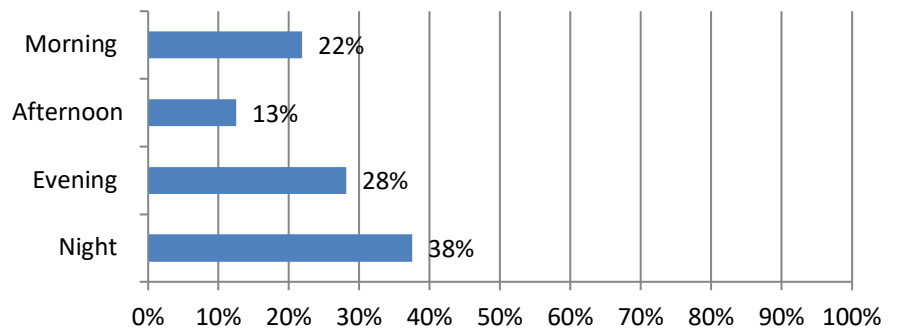
**9. Why do you think highway work zone construction is more dangerous today compared to a decade ago? (Check all that apply) (23 Responses)**



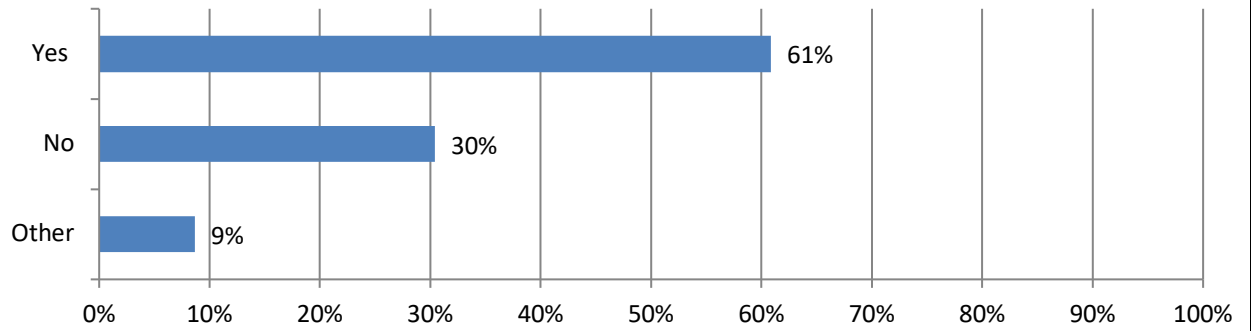
**10. Would any of these measures help reduce the number of highway work zone crashes, injuries and/or fatalities? (Check all that apply) (33 Responses)**



**11. Is there a particular time of day where motorist intrusion into work zones occurs most often? (32 Responses)**



**12. Is there an increase in incidence when performing night work? (23 Responses)**



**13. If you answered yes, what do you attribute this to? (14 Responses)**

